



LAHORE
MEDICAL & DENTAL
COLLEGE

Department of Community Medicine

STUDY GUIDE FOR MBBS STUDENTS

2022

Professor Seema Daud

Head, Department of Community Medicine

Lahore Medical & Dental College, Lahore

Table of Contents

Contents	Page No
INTRODUCTION	
Department of Community Medicine	1
Target Years	2
Learning Objectives	2
Teaching Methodologies	3
Attendance Requirement	3
Weightage in different years	3
CURRICULUM MAP	4
OUTLINE of UHS SYLLABUS	5
PRACTICAL & COMMUNITY BASED TRAINING	
Research Work	10
Field Visits	10
Skills Development Lab	10
Household Survey	10
Participation in National Immunization Days	10
Celebration of International Health Days	10
ASSESSMENT	
Methodology	11
Formative Assessment	11
Summative Assessment	11
LEARNING RESOURCES	
Recommended Textbooks	11
Physical Resources	11
PRACTICAL JOURNAL	
General Instructions	12
Press Cuttings	12
Field Visits	13
MAP OF LMDC & ATTACHED AREAS	14
Life Skills Curriculum Map	15
Life Skills Activities	16
Student Feedback form	17
MONTHLY PLANNERS	
Third year MBBS	18
Fourth year MBBS	19

DEPARTMENT OF COMMUNITY MEDICINE

Department of Community Medicine at Lahore Medical & Dental College (LMDC), was established in 2001 with a view to impart community based knowledge and skills to the undergraduate students of MBBS and BDS. The department has excelled in not only providing the basic knowledge of Community Medicine but also has pioneered community based research in various fields of Public Health importance. The faculty members and fourth year MBBS students have published numerous articles in indexed journals. The department regularly celebrates National and international health related events and conduct seminars on various health related issues, in which renowned speakers from various fields have been invited to share their expertise with the students and faculty. The department also has a state of art museum and a library. We have the most qualified faculty in the whole country. Our teaching methodology is problem oriented and student based. Students are evaluated at regular intervals and regular counseling is provided. Our endeavors have been rewarded with excellent results. The Department collaborates with various public and private health institutions and field level organizations where students receive hands on training.

TARGET YEARS

MBBS: First year, Second year, Third year and Fourth year.

LEARNING OBJECTIVES (*knowledge, skills, attitude*)

At the end of the training session medical students should be able to:

1. Appreciate health in a holistic paradigm, in relation to social, economic, environmental and occupational context.
 2. Recognize the role of Primary Health Care (PHC) Physician in managing community health.
 3. Be familiar with the components and planning of primary health care system.
 4. Understand the importance of curative, preventive and promotive aspects of health.
 5. Develop skills in communicating with the community.
 6. Obtain hands on training in conducting surveys.
 7. Conduct research projects and write a research report.
 8. Consider a large spectrum of community interventions when dealing with health problems.
-

TEACHING METHODOLOGIES

- 1) Interactive Lectures
 - 2) Small group discussions
 - 3) Self-directed Peer Assisted Learning (PAL)
 - 4) Essential Skills to be learned in the skills lab
 - 5) Student presentations & role plays
 - 6) Field Visits
 - 7) Household Surveys
 - 8) Research Projects
 - 9) CPC's
 - 10) Google classrooms
-

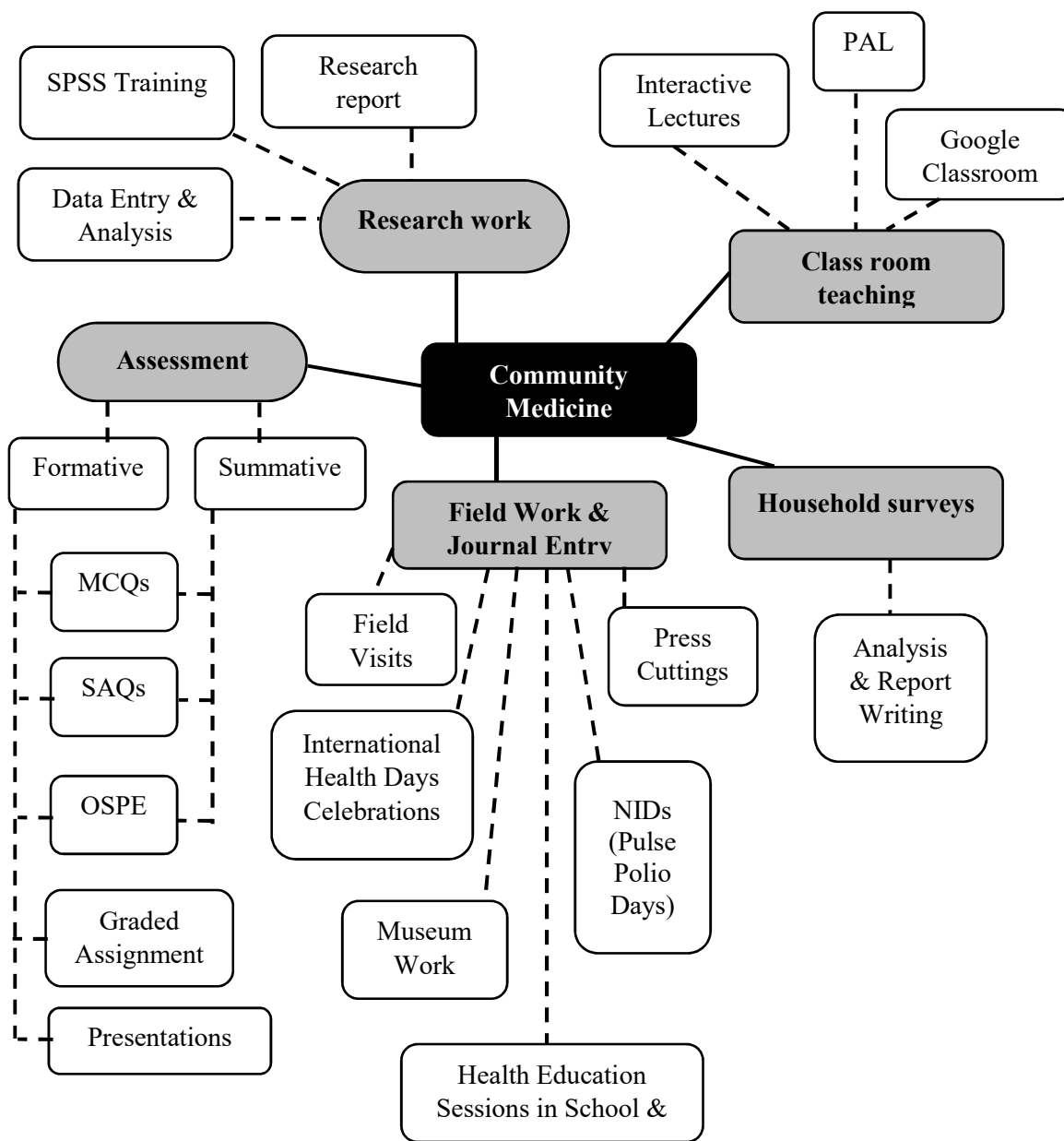
ATTENDANCE REQUIREMENT

- 1) Students are expected to attend all scheduled teaching sessions and examinations
 - 2) Attendance in lectures, PAL, and field work is mandatory. Absence from these sessions will make the students ineligible to sit the final summative assessment.
 - 3) A minimum of 75% attendance in the lectures and other sessions is mandatory to appear in the summative University of Health Sciences (UHS) summative examination
 - 4) Attendance will be recorded manually and through a log-in/log-out biometrics system
 - 5) Absence due to illness must be certified appropriately by the General Physician
-

COMMUNITY MEDICINE SUBJECT WEIGHTAGE IN DIFFERENT YEARS

Academic Years (MBBS)	First Year	Second Year	Third Year	Fourth Year	Total
Weightage (%)	10%	10%	20%	60%	250 (100%)

CURRICULUM MAP



COURSE TO BE STUDIED (OUTLINE OF UHS SYLLABUS)

The course outline is as follows:

1. Concept of Health and Disease

- Concept of health,
- Definition of health (dimensions, physical, mental, social and spiritual),
- Spectrum of health,
- Determinants of health,
- Responsibility for health,
- Indicators of health
- Concept of disease,
- Concept of causation (all theories including ecological triad, agent host and environmental factors),
- Spectrum of disease,
- Iceberg phenomenon,
- Natural history of disease,
- Levels of prevention,
- Disease elimination and eradication
- Disease surveillance

2. Introduction to Public Health and Health Systems in Pakistan

- Background and concepts: Definitions and concepts in Public Health.
- Development of Public Health in Pakistan,
- Economics and Health,
- Health Policy and planning in Pakistan,
- 'Health for all': Background, Concepts and Progress,
- Primary Health Care: Concepts and Progress,
- National Disease Control programs, policies, strategies and operations
- Health System in Pakistan: The role of Federal and Provincial Governments in Health care.
- The District Health System in the context of devolution.
- The physician as a manager: Function of manager management of material, human and financial resources, Leadership and motivation,
- Partners in Health: The public and private sector. Nongovernmental Organizations and International Agencies,
- Resources for health,
- Community Mobilization.

3. Epidemiology and disease control

- General Epidemiology and Research methodology
- Background and concepts, uses, Basic measurements in Epidemiology (morbidity, mortality, disability and fatality), Epidemiological methods (descriptive, analytic

- and experimental), Epidemiological transition, Association and causation, Investigation of an outbreak or an epidemic
- Screening for disease, Community diagnosis, Research and survey methodology. Introduction to Quantitative and Qualitative research methodology
- Prevention and control of Infectious diseases:

Definitions to differentiate between

- Infection, contamination, pollution, infestation
- Infectious disease, communicable disease, Contagious disease
- Host, Immune and susceptible persons
- Sporadic, Endemic, Epidemic, Pandemic
- Epizootic Exotic, Zoonosis
- Contact, fomites, Carriers, Insect Vectors, Reservoir of Infection
- Incubation period, infective period, generation time
- Cross infection, Nosocomial infection, Opportunistic infections, Iatrogenic (Physician induced) disorders
- Surveillance, Eradication, Elimination.

Dynamics of infectious disease Transmission

- Reservoir and source of infection,
- Escape of organism,
- Mode of transmission,
- Entry into the body,
- Susceptible host,
- Immunity (different types of immunity and immunization)

Control of infection

- Controlling the reservoir-notification, early diagnosis, treatment, isolation, quarantine, disinfections, Interruption of transmission
- The susceptible host (active & passive immunization
- Chemoprophylaxis, Non-specific measures).
- Health advice to travelers
- National case management guide lines.
- Epidemiology, control and prevention of infectious diseases of Public Health importance
- Diseases transmitted through inhalation
- Diseases transmitted through Faeco-oral route
- Arthropod borne diseases.
- Diseases of animals conveyed to man
- Diseases due to direct contact
- Epidemiology, Control and prevention of non-infectious diseases of Public Health importance
- Hypertension,
- Coronary heart disease,
- Cancers,
- Injuries
- Diabetes Mellitus,

- Obesity,
- Acute Rheumatic fever and heart disease.

4. Biostatistics

- Concepts and uses
- Data and its types
- Rates, ratios and proportions
- Crude, specific and standardized rates
- Collection and registration of vital events in Pakistan
- Sources of health related statistics
- Measures of central tendency, (Mean, Median, Mode)
- Measures of dispersion (Range, Standard deviation, Standard error).
- Normal curve,
- Methods of data presentation (tables, graphs & diagrams).
- Interpretation of data (t-test and Chi-square test)
- Sampling and its various techniques.
- Health Management Information System

5. Demography and Population dynamics

- Concept, demographic principles and demographic processes
- Census, definition, methodology, types.
- Determinants of fertility, mortality
- Population Pyramid and its interpretation
- Demographic Transition, Demographic Trap and its public health importance.
- Demographic and social implication of high population growth.
- Social Mobilization
- Urbanization

6. Food and Nutrition

- Concepts (Nutrition, Nutrient, Food, Diet). Food groups and their functions.
- Role of fiber in diet,
- Balanced Diet.
- Malnutrition at all stages of life, its types causes and prevention, Common nutritional problems of public health importance and their prevention and control.
- Dietary requirements of normal human being at different stages of life.
- Food hygiene, Pasteurization, fortification, additives and adulteration and preservation.
- Food poisoning
- Assessment of nutritional status of a Community.

7. Reproductive, Maternal and Child Health

- Safe motherhood, and its components. (Ante-natal, Post-natal, Family Planning & Emergency Obstetric Care)
- Maternal mortality causes and prevention.
- Infant care: Health promotion strategies. Common ailments, home accidents child mortality prevention, Strategic approaches of integrated Management of Childhood Illness

- Adolescent health.
- Reproductive tract infections: guidelines for management of STD's.

8. Health of school age children

- Role of teachers and role of doctor in maintenance of health.
- Procedures for determining health status of school age children
- Common health problems of school children

9. Environmental Health Sciences:

- Air Composition of air. Causes of Air pollution, Purification of Air, Diseases caused by impurities in air and their prevention
- Water: Sources of Water. Daily water requirement, Water pollution its causes and prevention, Purification of Water, Water quality Standards. Diseases due to polluted water
- Waste disposal: Contents, hazards and safety measures for solid and liquid; Domestic, Industrial and Hospital waste
- Climate: Climate and weather. Global environmental concerns (Green house effect, depletion of ozone layer, Acid rains). Effect of
- Extremes of temperature humidity, atmospheric pressure on human health and their prevention.
- Radiation: Sources, types, causes, hazards and prevention.
- Healthful housing. Urban and rural slums. Refugee camps and hostels.
- Noise: Definition causes. acceptance level, hazards and control

10. Occupational Health

- Concepts, of occupational health, occupational medicine and occupational hygiene. Ergonomics and its importance
- Occupational hazards. Principles of control
- General principles of occupational disease prevention.
- Organization of occupational health services.
- Health Insurance and Social Security Schemes

11. Arthropods and their public health importance

- Common arthropod borne diseases
- Control of arthropods of medical importance.
- Insecticides and their public health importance

12. Prevention and control of parasitic diseases of public health importance

13. Snake Bites:

Personal protection and management

14. Mental Health:

- Concept, Common mental health problems, their causes, prevention and control.
- Juvenile delinquency

15. Behavioral Sciences and lifestyle:

- Concept, attitudes health and illness Behavior
- Drug abuse, addiction and smoking
- Child abuse and child labor
- Role of physical exercise in health disease

16. Information, Education and Communication (IEC)

- Concept, Aims and objectives
- Approaches used in public health
- Contents, principles and stages of health education
- Communication methods, barriers and Skills in health education
- Planning, organizing and evaluating a health education programme
- Social marketing

17. Disaster:

- Definition,
- Classification, (Natural disasters like earthquake floods,
- Epidemic of communicable diseases,
- Man Made Disasters,
- Accidents, thermonuclear warfare, causes and prevention),
- Magnitude and effects of disaster and Public Health consequences,
- Disaster Preparedness
- Disaster Management

18. Medical Ethics:

- Background concepts and components
 - National recommended guidelines.
-

PRACTICAL AND COMMUNITY BASED TRAINING

I) Research Work

Students will be provided practical experience in questionnaire development, data collection compilation presentation. Analysis and report writing

II) Field Visits

1. Visit to BHU and RHC
2. Visit to an NGO
3. Visit to a primary school to assess the nutritional status of school children
4. Visit to MCH/Reproductive Health Centre to observe the organization, and function of the centre and to demonstrate counseling skills in one of the following
 - Nutritional counseling for children
 - Pregnant and lactating women
 - Antenatal care
 - Family planning services
 - Immunization others
5. Visit to a hospital to see the hospital waste disposal
6. Visit to an industry
7. Visit to a physical/mental/school rehabilitation centre

III) Skills Development Lab

1. Water purification at domestic level
2. Contraceptives
3. Vaccination including the cold chain
4. Oral rehydration solution
5. Data entry & Analysis in SPSS

IV) Household Survey

Students will conduct population based survey, using a structured questionnaire. The survey results will be analyzed and will be presented in the form of a written report containing tables and graphs.

V) Participation in National Immunization Days

Students will participate in administering polio vaccines in the community and hospital, during national immunization days.

VI. Celebration of International health days

Students will celebrate selected health days in the college or in the community to generate awareness about specific health issues

ASSESSMENT

Methodology

- Written Class Tests:
 - Short Answer Questions (SAQs) &
 - Multiple Choice Questions (MCQs)
- Quiz
- Objectively Structured Practical Examination (OSPE)
- Meeting Deadlines of Assignment Submission
- Participation in Research Project (tool development, literature review, write up)
- Class Presentations
- PAL Feedback
- Development of Information, Education and Communication (IEC) material
- Attendance

Formative Assessment (Internal Assessment): **30 marks**

- Attendance: 9 marks
- Academics (class test + graded exercise): 9 marks
- Journal work & Submission Deadlines: 6 marks
- Behavior: 6 marks

Summative Assessment (Fourth Professional University Exam): **300 marks**

- **Internal Assessment:** **Total marks 30**
- **Written Exam:** **Total marks 135**
 - Short Answer Questions (SAQs) &
 - Multiple Choice Questions (MCQs)
- **Practical Examination:** **Total marks 135**
 1. Objectively Structured Practical Examination (OSPE): 40 marks
 2. Viva Voce:
 - General: 70 marks
 - Household Survey: 5 marks
 - Research Project: 10 marks
 - Field Visit & Press Cuttings Journal: 10 marks

LEARNING RESOURCES

Recommended Textbooks:

1. Park K. Park's textbook of preventive and social medicine. 23rd ed. Jabalpur, India: Banarasidas Bhanot Publishers, 2015.
2. Ilyas M, Ansari MA. Public Health and Community Medicine. 8th ed. Karachi, Pakistan: Time Publishers, 2016.

Physical resources available:

General library, IT library, Skills lab, Museum artifacts, models and specimen, Handouts

General Instructions

Field visits/ Celebration of International days are practical training of community medicine. Each visit / celebration is to be recorded in journal with your own observations / comments and suggestions. This is a hand on training for community work. Visiting a pre urban community for sanitation, housing, and schools must be studied critically for any draw back and suggestions for improvement.

Journal has been divided in to three sections:

- 1) Press cutting section
- 2) Field visits
- 3) Celebration of International Days

Practical journal should be brought regularly during Demonstration section and should be submitted with the batch In-charge on the same day. Practical Journal will not be signed cumulatively at the end of the session.

- Always come prepared in advance for demonstration/ field visits.
- Make entries of only what you have seen.
- Give your own ideas and create innovations. Do not copy or follow others.
- You should be fully versed what you have written in your journal, so that when the examiner enquires about what you have written, you are ready to explain it.
- In field demonstration, keep a diary for noting the observations, which make in foot-line for writing in the practical journal.
- Always be polite, alert and punctual.
- Wear white crisp overalls and Identity cards during field visits.

Instructions for Press Cutting Section

In this section you have to paste 10 press cuttings.

- The press cuttings have to be about issues of public health importance like nutrition, environmental issues, communicable or non-communicable diseases, immunization, disasters, mental health, maternal & child health etc.
- Press cuttings can be taken from newspapers (either Urdu or English), magazines or internet sources (not more than two).
- All press cuttings must be about health issues, disease prevention or control and health promotion programs or projects in **Pakistan**.

The format of writeup in press cutting section is as follow:

Source and date: Write down the name of newspaper or magazine or details of website with date.

Summary: Briefly describe the whole press cutting.

Comments and Suggestions: Write your own comments and suggestions regarding the above press cutting.

Pictures: Appropriate picture /s can also be pasted according the above selected topic.

Instructions for Field Visits

Field visits will be arranged to places of community health importance. Students will write their own observations and critical analysis. The outline of conducting a field visit is given below for the guidance of the students.

As a public health physician, wherever you visit a place / institution / factory etc, you should be clear about the points of interest, which are of public health importance. These observations are to be recorded. For Convenience and to keep a proper sequence of what needs to be observed a formula of “6 Ps” should be kept in mind.

PURPOSE: Objectives of the visit

PREMISES: Means the actual site and its surroundings (where situated), first impression of the building, general cleanliness of the area source, system of water supply and waste & sewage disposal managements.

PLANT:

General points

Type of plant (factory, hospital, purification plant etc.), various sections or departments, ventilations and arrangements, air conditioning facilities, lighting arrangements, electric fitting, fire fighting arrangements, toilet, bathing and washing facilities etc.

Specific points

In case of a factory

Temperature at work place, humidity of working environment, any emergency alarming system, provision of first box in each section" provision of hospital & dispensary.

In case of a hospital/ clinic

Catchments are population to be served, nearest referral health institution, emergency services, lab facilities, teaching and training facilities.

PROCESS:

It includes brief description of working of the plant or procedure being adopted which is specific for a particular place.

PERSONNEL:

These are divided into two groups

i. Management Group

Number and organization setup, periodical medical check up, personal hygiene of the individuals, their attitude and the behavior.

ii. Workers or Labour group

Numbers of workers, periodical medical check up, personal hygiene of the individuals, their attitude and the behavior, working hours and recreational activities.

COMMENTS & SUGGESTIONS:

Comments

To discuss critically the good and bad points observed during the visit of the place.

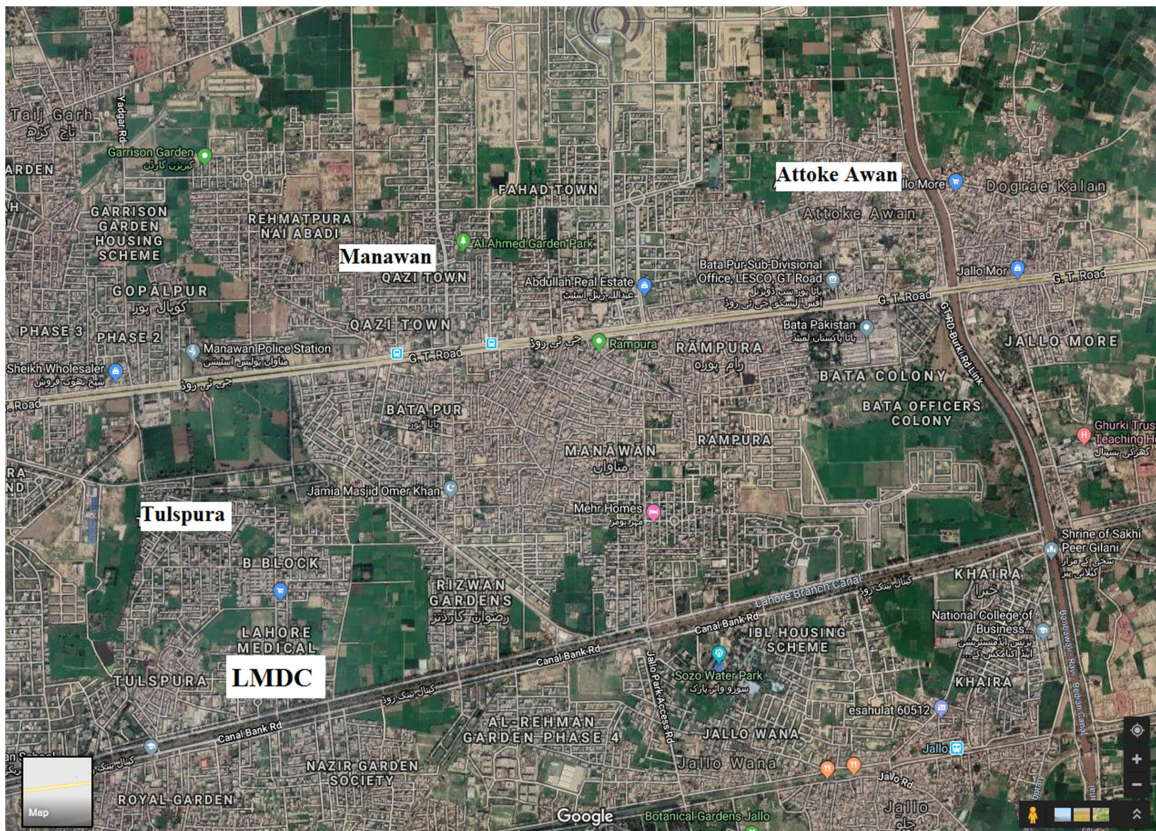
Suggestions

Includes recommending measures to improve the weak areas and strengthen the good aspects noted during the visit

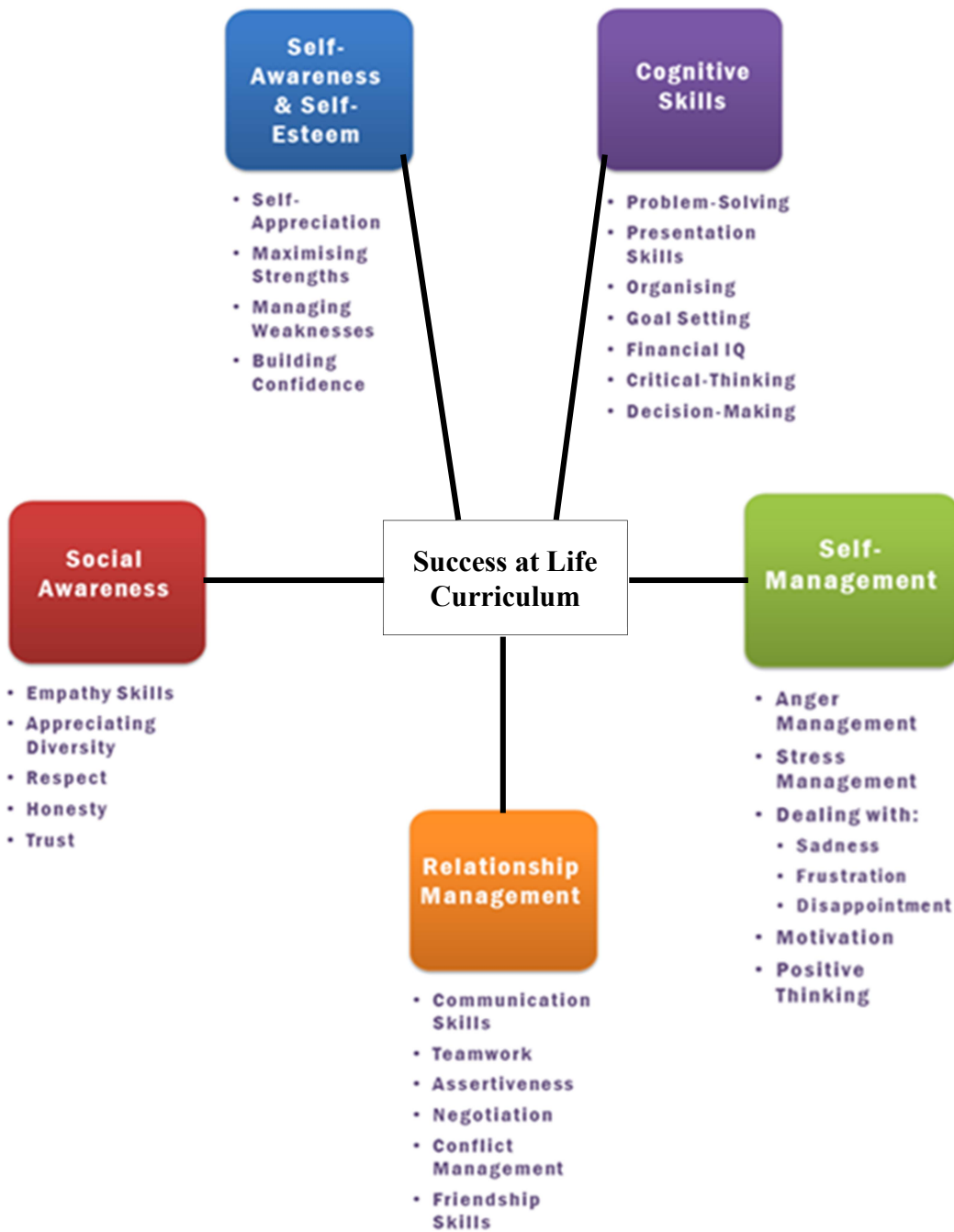
Instructions for International Days Celebration/ NID Section

- In this section you have to write about Day celebration.
- Appropriate picture / pictures can be pasted

MAP OF LMDC & ATTACHED AREAS



LIFE SKILLS CURRICULUM MAP



LIFE SKILLS COURSE

Introduction

Life Skills course was introduced at LMDC in 2015. The vision behind this innovation was the belief that such support from within the college would aid in helping the students unwind and prepare themselves as more effective learners.

Course Content

	TOPIC/ ACTIVITY
1.	Orientation – Introduction to Life Skills
2.	Will Power, Focus & Discipline
3.	Dealing with the Motivation Murderers
4.	Negative Thoughts, Attitudes & Behavior
5.	Beware, being Toxic is Not a way of Life
6.	Anger Management: Control Your Anger Before it Controls You
7.	Replacing your Negative Thoughts - Rising to Embrace Positivity
8.	Unity of Thought
9.	12 Steps to a Compassionate Life
10.	Empathy Matters
11.	Transactional Analysis and the Construction of a New You
12.	Uncontrolled Emotions & Aggressive Behavior
13.	Where Need Meets Opportunity, Awareness - Consciousness - Responsibility - Life
14.	Activation of Learning Processes via Activation of Effective Reading & Learning Methodologies Part 1
15.	Motivation Essentials
16.	Johari Window - Understanding the Interplay Between Self & Others
17.	Touched by Life Not Bored with Psychological Overload
18.	13 Lessons of Life
19.	Getting Over Your Self Created Road Blocks; Discover the Art of Spontaneous Speaking
20.	Is Aging Your Ticket to Maturing?
21.	Minimize Drama, Be on a Personal Journey for Seeking Happiness
22.	Why Seek Self Actualization?
23.	Why Ethics
24.	Being Mindful
25.	Stress: Identify & Understand the Stressors that Effect Academic Performance
26.	Avoiding Manipulation Through Self Belief and Raised Vibrations
27.	Understanding the Self - The First Building Block
28.	Self Discovery & Self Actualization Leads the Way for the Development of Excellent Leadership Skills
29.	Activation of Learning Processes via Activation of Effective Reading & Learning Methodologies Part 2
30.	The Fully Functional Person as Defined by Carl Rogers - Father of Humanistic Theories
31.	A Debate: Adversity Builds Character

STUDENT FEEDBACK FORM

Instructions: Please check the most appropriate cell for each statement.

Key:

1. Unsatisfactory	2. Fair (Satisfactory)	3. Good	4. Very Good	5. Excellent
-------------------	------------------------	---------	--------------	--------------

Sr. No.	Statements	1	2	3	4	5
1.	Learning was facilitated in the lectures					
2.	The basic course is interpreted with clinical scenarios					
3.	Depth of the course content was appropriate					
4.	The syllabus covered was adequate for current academic year					
5.	The internal evaluation system is appropriate					
6.	The weightage of the course is relevant to internal assessment					
7.	Student-teacher relationship for current academic year					
8.	Internal assessment system is aligned with the course					
9.	The textual reading material was clear and relevant					
10.	The additional source material was relevant (further reading and handout, library)					
11.	The teaching aids were effectively used					
12.	The course material handed out was adequate					
13.	The teachers treats students with respect					
14.	The teachers effectively directs and stimulates discussion					
15.	The teachers effectively encourages students to ask questions and give answers					
16.	Format of this class (lecture, discussion), is helpful to the way of learning					
17.	The class format engaged my interest					
18.	Learning is better when the teacher summarizes key ideas from a class session					



LAHORE MEDICAL & DENTAL COLLEGE
CANAL BANK NORTH TULSPURA, LAHORE
PHONE NO: 0346-4418891-98 FAX: 37392220
NO. LMDC/ /22, DATED

TIME TABLE 3rd YEAR M.B.B.S SESSION 2019-2020 w.e.f. 24-03-2022

Day & Time	08:00 a.m. to 09:30 a.m.		09:30 a.m. to 09:45 a.m.	09:45 a.m. to 11:45 a.m.	11:45 a.m. to 12:00 noon	12:00 noon to 12:15 p.m.	12:15 p.m. to 01:00 p.m.	01:00 p.m. to 02:30 p.m.
Monday	Grand Tutorial 1 st week Pharmacology 2 nd week Community Medicine 3 rd week Pathology 4 th week Clinical Pharmacology Lecture Theatre No. 3		TRAVEL TO GTTH	Clinical Ward	TRAVEL TO LMDC	BREAK	Forensic Medicine Lecture Theatre No. 3	Pathology Pharmacology Forensic Medicine Clinical Pathology Clinical Pharma
	08:00 a.m. to 08:45 a.m.	08:45 a.m. to 09:30 a.m.						
Tuesday	Pathology Lecture Theatre No. 3	Pharmacology Lecture Theatre No. 3	Clinical Ward / Skill Lab for one batch	Clinical Ward	TRAVEL TO LMDC	BREAK	**Pharmacology / Forensic Medicine Lecture Theatre No. 3	Pathology Pharmacology Forensic Medicine Clinical Pathology Clinical Pharma
Wednesday	Pharmacology Lecture Theatre No. 3	Pathology Lecture Theatre No. 3					Forensic Medicine Lecture Theatre No. 3	Pathology Pharmacology Forensic Medicine Clinical Pathology Clinical Pharma
Thursday	Forensic Medicine Lecture Theatre No. 3	Pharmacology Lecture Theatre No. 3	09:30 a.m. to 10:15 a.m.	10:15 a.m. to 10:30 a.m.	10:30 a.m. to 11:15 a.m.	11:15 a.m. to 12:00 noon		
Friday	08:00 a.m. to 09:15 a.m.		Eye Lecture Theatre No. 3	BREAK	Pathology Lecture Theatre No. 3	Pharmacology Lecture Theatre No. 3	Behavioural Sciences Lecture Theatre No. 3	11:30 a.m. to 01:00 p.m.
	Pharmacology Lecture Theatre No. 3		ENT Lecture Theatre No. 3		Pathology Lecture Theatre No. 3	* Medicine / Surgery Lecture Theatre No. 3		Pathology Pharmacology Forensic Medicine Clinical Pathology Clinical Pharma
								C+D E+F G+H I+J A+B



LAHORE MEDICAL & DENTAL COLLEGE
CANAL BANK NORTH, TULSPURA, LAHORE
PHONE NO: 0346-441891-98, FAX: 37392220
NO. LM&DC/
/2022, DATED:

4th YEAR M.B.B.S TIME TABLE SESSION 2018-2019 w.e.f. 06-05-2022

DAYS	08:00 a.m. to 08:45 a.m.	08:45 a.m. to 09:45 a.m.	09:45 a.m. to 10:30 a.m.	10:30 a.m. to 11:15 a.m.	11:15 a.m. to 12:00 noon	12:00 noon to 12:15 p.m.	12:15 p.m. to 02:15 p.m.	02:15 p.m. to 02:30 p.m.
MONDAY	ENT Lecture Theater No. 2	CPC	Pathology Lecture Theater No. 2	Community Medicine Lecture Theater No. 2	Medicine Lecture Theater No. 2		WARD	
TUESDAY	08:00 a.m. to 08:45 a.m. Medicine / Psychiatry Lecture Theater No. 2	08:45 a.m. to 09:30 a.m. Pathology Lecture Theater No. 2	09:30 a.m. to 11:00 a.m. Practical Pathology	11:00 a.m. to 11:15 a.m.	11:15 a.m. to 12:00 noon Surgery-II Lecture Theater No. 2		WARD	
WEDNESDAY	ENT Lecture Theater No. 2	EYE Lecture Theater No. 2	Practical Community Medicine Lecture Theater No. 2	Break		Community Medicine Lecture Theater No. 2	WARD / SKILLS LAB	
THURSDAY	Pathology Lecture Theater No. 2	EYE Lecture Theater No. 2	Practical Pathology			Gynae Lecture Theater No. 2	WARD	
FRIDAY	08:00 a.m. to 09:30 a.m. Pathology Tutorial Lecture Theater No. 2	09:30 a.m. to 10:15 a.m. Community Medicine Lecture Theater No. 2	10:15 a.m. to 11:00 a.m. Surgery-I Lecture Theater No. 2	11:00 a.m. to 11:15 a.m. Break	11:15 a.m. to 12:00 noon Pediatrics Lecture Theater No. 2	12:00 noon to 12:45 p.m. Pathology Lecture Theater No. 2		

No. LM&DC/6055-70 122, Dated: 27-4-22

Copy for Information to the:-

1. Principal, Lahore Medical & Dental College, Lahore
2. Heads of all concerned Departments
3. Director Administration, LMDC
4. Director Medical Education, LMDC
5. Director Skills Lab., LMDC
6. Director IT, LMDC
7. Medical Superintendent, GTTH
8. Chairman Time Table Committee, LMDC
9. Transport In Charge, LMDC
10. Lecture Theatre In Charge, LMDC
11. Warden/Assistant Warden Hostels (Boy/Girl)
12. Security Supervisor, LMDC
13. Class Representative (Boy/Girl)
14. M/s All Tours, LMDC
15. Notice Board

Monthly test schedule:-

- 1st week Community Medicine
- 2nd week Eye
- 3rd week ENT
- 4th week Pathology

PROF. DR. A. MAJEED CHAUDHRY
PRINCIPAL